

MONTHLY MEMBERSHIP PROGRESS REPORT

LOCATION FLORIDA

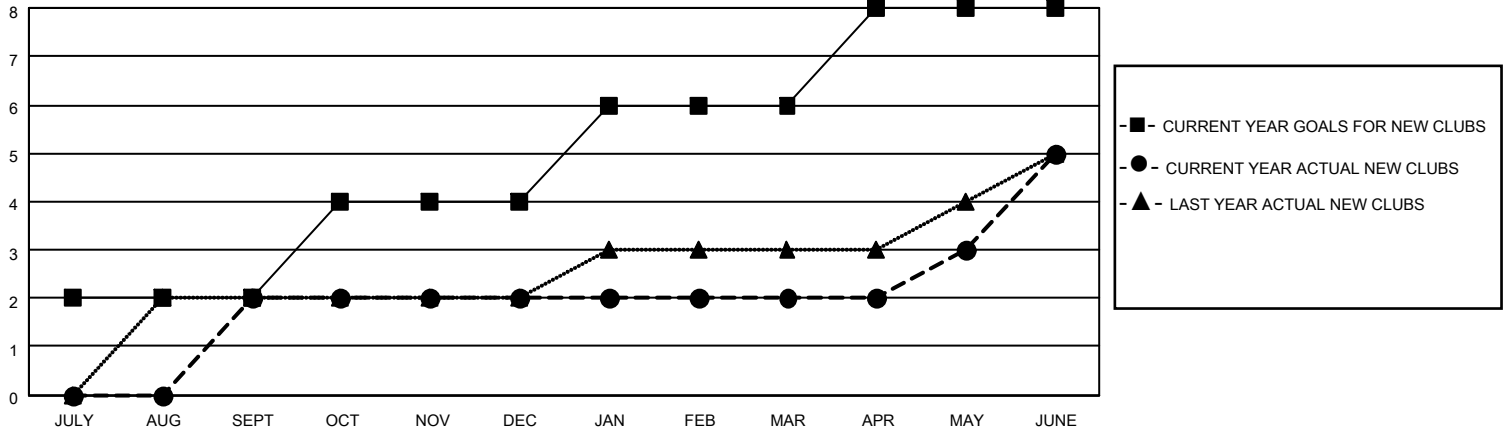
District 35 L

Results as of: 6/30/2023

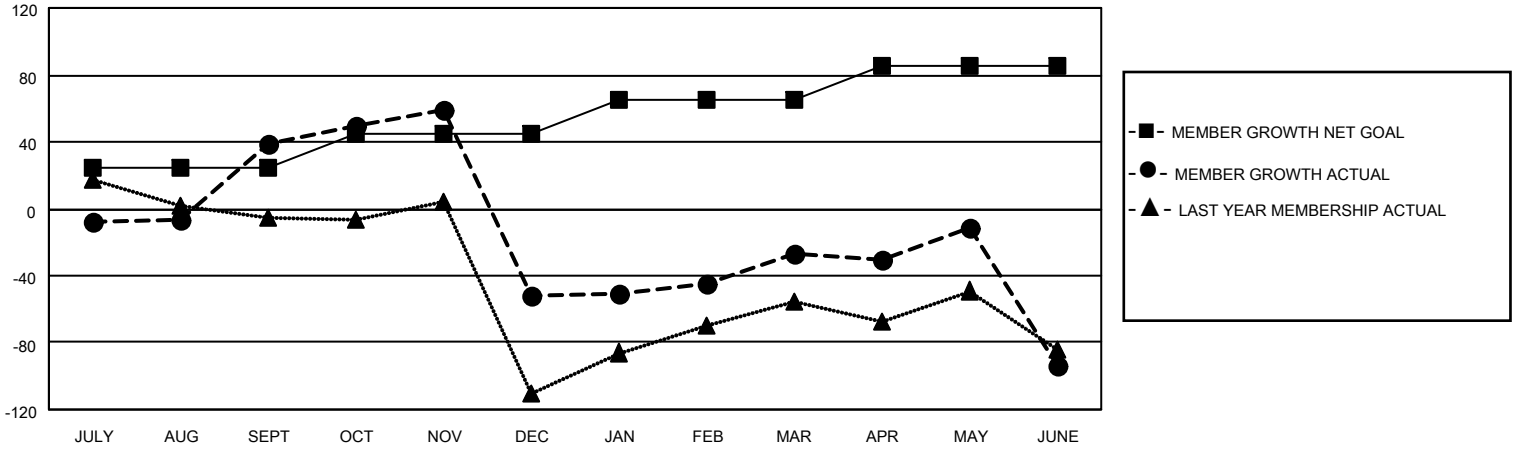
Clubs			
RESULTS FOR 2022-2023			
QUARTER	NEW CLUB GOAL	NEW CLUBS	DROPPED CLUBS
JULY/AUG/SEPT	2	2	3
OCT/NOV/DEC	2	0	4
JAN/FEB/MAR	2	0	0
APR/MAY/JUNE	2	3	5

Members			
RESULTS FOR 2022-2023			
QUARTER	MEMBER GROWTH NET GOAL	MEMBER GROWTH ACTUAL	DROPPED MEMBERS ACTUAL (including transfers)
JULY/AUG/SEPT	25	96	40
OCT/NOV/DEC	20	58	141
JAN/FEB/MAR	20	76	34
APR/MAY/JUNE	20	111	171

GOALS AND ACTUAL NEW CLUBS CUMULATIVE



GOALS AND ACTUAL MEMBERS CUMULATIVE



DROPPED CLUBS: 12

46 CLUBS OF 68 ADDED 1 OR MORE NEW MEMBERS

GENDER DISTRIBUTION

DROPPED MEMBERS

DECEASED	24
CLUB CANCELLED	90
OTHER	272
TOTAL	386

MALE	685 (59.10%)
FEMALE	472 (40.72%)
NON BINARY	1 (0.09%)
PREFER NOT TO ANSWER	1 (0.09%)

[CLICK HERE FOR CUMULATIVE MEMBERSHIP DATA](#)

TOTAL FAMILY UNIT MEMBERS	236
FAMILY MEMBERS PAYING HALF DUES	119